

Drøm om Selvhjælp

Piano

- sange til verden -

Emil V. Johannessen

Arr: Flemming Berg

♩=174 **INTRO**

Bm Bm⁷ Bm **2** Bm⁷ Bm **2** Bm⁷ Bm **2** Bm⁷

9 Gmaj⁷ Gmaj⁹ **2** Gmaj⁷ **2** Gmaj⁷(#11) **2**

VERS 1

17 F#m⁷ D(add9) G⁶ D(add9) F#m⁷ D(add9)

29 G⁶ D Bm⁷ G(add9) D

39 Em⁷

43 Gmaj⁹

47 **OMKVÆD 1**

Gmaj9

D

53 Gmaj9

D

Gmaj9

58

D

Gmaj9

MELLEmspIL 1

63 Bm

Bm7

Bm

2 Bm7

Bm

2 Bm7

Bm

2 Bm7

Bm

2 Bm7

71 Gmaj7

Gmaj9

2 Gmaj7

2 Gmaj7(#11)

2

VERS 2

79 F#m7

D(add9)

G6

D(add9)

F#m7

D(add9)

91 G6

D

Bm7

G(add9)

98

D

Em7

MELLEMPIL 2

105 Gmaj7 Gmaj9 2 Gmaj7 2

111 Gmaj7(#11) 2 Gmaj7 2 Gmaj7(add13) 2 Gmaj7 2 Gmaj7 2

121 D **OMKVÆD 2+3** Gmaj9 D

127 Gmaj9 D Gmaj9

132 D Gmaj9 D

Drøm om Selvhjælp

Synth Brass

- sange til verden -

Emil V. Johannessen

Arr: Flemming Berg

♩=174 **INTRO**

Bm Bm⁷ Bm **2** Bm⁷ Bm **2** Bm⁷ Bm **2** Bm⁷

9 Gmaj⁷ Gmaj⁹ Gmaj⁷ Gmaj⁷(#11)

VERS 1

17 F#m⁷ D(add9) G⁶ D(add9) F#m⁷ D(add9)

29 G⁶ D Bm⁷ G(add9) D

38 Em⁷ Gmaj⁹

OMKVÆD 1

47 D Gmaj⁹ D Gmaj⁹ D Gmaj⁹

MELLEmspIL 1

59 D Gmaj⁹ Bm Bm⁷

65 Bm **2** Bm⁷ Bm **2** Bm⁷ Bm **2** Bm⁷

71 Gmaj7 Gmaj9 Gmaj7 Gmaj7(#11)

VERS 2

79 F#m7 D(add9) G6 D(add9) F#m7 D(add9)

91 G6 D Bm7 G(add9) D Em7

MELLEmspIL 2

102 Gmaj7 Gmaj9 Gmaj7 Gmaj7(#11)

OMKVÆD 2+3

113 Gmaj7 Gmaj7(add13) Gmaj7 D Gmaj9

124 D Gmaj9 D

131 Gmaj9 D Gmaj9 D

Drøm om Selvhjælp

Electric Guitar

- sange til verden -

Emil V. Johannessen

Arr: Flemming Berg

♩=174

INTRO

Musical notation for the first line of the Intro, measures 1-8. Chords: Bm, Bm⁷, Bm, Bm⁷, Bm, Bm⁷, Bm, Bm⁷. Dynamics: *f*.

Musical notation for the second line of the Intro, measures 9-16. Chords: Gmaj⁷, Gmaj⁹, Gmaj⁷, Gmaj⁷(#11). Dynamics: *f*.

VERS 1

Musical notation for the first line of Verse 1, measures 17-23. Chords: F#m⁷, D(add9), G⁶, D(add9). Dynamics: *mf*.

Musical notation for the second line of Verse 1, measures 24-30. Chords: F#m⁷, D(add9), G⁶.

Musical notation for the third line of Verse 1, measures 31-37. Chords: D, Bm⁷, G(add9), D.

Musical notation for the fourth line of Verse 1, measures 38-45. Chords: Em⁷, Gmaj⁹.

OMKVÆD 1

Musical notation for the first line of the Chorus, measures 46-53. Chords: D, Gmaj⁹, D. Dynamics: *f*.

Musical notation for the second line of the Chorus, measures 54-62. Chords: D, Gmaj⁹, D, Gmaj⁹. Measure numbers: 8, 12, 16.

MELLEMSPIL 1

Musical notation for the first line of the Interlude, measures 63-70. Chords: Bm, Bm⁷, Bm, Bm⁷, Bm, Bm⁷.

Electric Guitar

Drøm om selvhjælp

69 Bm Bm⁷ Gmaj⁷ Gmaj⁹ Gmaj⁷

VERS 2

77 Gmaj⁷(#11) F#m⁷ D(add9) G⁶

85 D(add9) F#m⁷ D(add9) G⁶

92 D Bm⁷ G(add9)

98 D Em⁷

MELLEmspIL 2

105 Gmaj⁷ Gmaj⁹ Gmaj⁷ Gmaj⁷(#11) Gmaj⁷

OMKVÆD 2+3

114 Gmaj⁷(add13) Gmaj⁷ D

123 Gmaj⁹ 4 D Gmaj⁹ 8 D

131 Gmaj⁹ 12 D Gmaj⁹ 16 D

Drøm om Selvhjælp

Electric Bass

- sange til verden -

Emil V. Johannessen

Arr: Flemming Berg

♩=174 **INTRO**

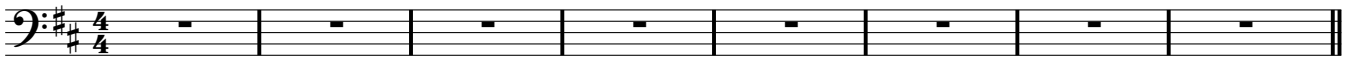
Bm

Bm⁷ Bm

Bm⁷ Bm

Bm⁷ Bm

Bm⁷



VERS 1



MELLEMSPIIL 1



66 Bm⁷ Bm Bm⁷ Bm Bm⁷

71 Gmaj⁷ Gmaj⁹ 2 Gmaj⁷ 2 Gmaj⁷(#11) 2

VERS 2

79 F#m⁷ D(add9) G⁶

85 D(add9) F#m⁷ D(add9)

90 G⁶ D

95 Bm⁷ G(add9) D Em⁷

MELLEmspIL 2

102 3 Gmaj⁷ Gmaj⁹ 2 Gmaj⁷ 2

111 Gmaj⁷(#11) 2 Gmaj⁷ Gmaj⁷(add13) 2 Gmaj⁷ 2

119 2 D **OMKVÆD 2+3** Gmaj⁹

125 D Gmaj⁹ D

130 Gmaj⁹ D

134 Gmaj⁹ D

Percussion

Drøm om Selvhjælp

- sange til verden -

Emil V. Johannessen

Arr: Flemming Berg

$\text{♩} = 174$ **INTRO** **VERS 1**

8 8 cow b. cow b. cow b.

Flor tom siode Flor tom siode Flor tom siode

21 4

25 4 4

OMKVÆD 1

33 14 cow b. cow b. cow b.

Flor tom siode Flor tom siode Flor tom siode

51 4

55 4 4

MELLEMSPI 1 **VERS 2**

63 8 8 cow b. cow b. cow b.

Flor tom siode Flor tom siode Flor tom siode

83 4

87 4 4

MELLEMSPI 2 **OMKVÆD 2+3**

95 10 16 cow b. cow b.

Flor tom siode Flor tom siode

124 cow b. 4

Flor tom siode

129 4 4

Detailed description: This is a percussion score for a song. It consists of ten staves of music. The first staff is the 'INTRO' and 'VERS 1', starting at measure 1. It features a 4/4 time signature and a tempo of 174. The first two measures are marked with a bar line and the number '8'. The next two measures are also marked with a bar line and '8'. The following four measures contain rhythmic notation with 'x' marks for cowbells and 'o' marks for 'Flor tom siode'. The next two measures are marked with a bar line and '4'. The 'OMKVÆD 1' section starts at measure 33, with a 14-measure rest followed by rhythmic notation. The 'MELLEMSPI 1' section starts at measure 63, with an 8-measure rest followed by rhythmic notation. The 'OMKVÆD 2+3' section starts at measure 95, with a 10-measure rest followed by a 16-measure rest and then rhythmic notation. The final two staves (measures 124 and 129) contain rhythmic notation and rests.

Drøm om Selvhjælp

Drum Set

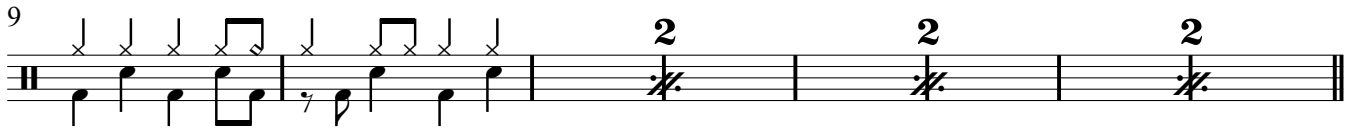
- sange til verden -

Emil V. Johannessen

Arr: Flemming Berg

♩=174 **INTRO**

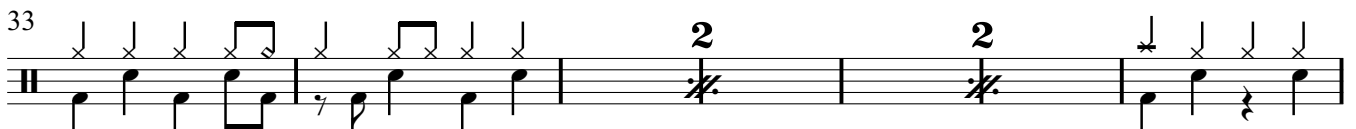
4/4 *p* 

9 

VERS 1

17 

23 

33 

40 

OMKVÆD 1

47 

53 

2 **MELLEMSPIL 1**

Drum Set

Drøm om selvhjælp

63

71

VERS 2
79

85

95

MELLEMSPIL 2
103

111

OMKVÆD 2+3
121

129